

Post-COVID Advocacy on animal issues

September 2020

Presented by: Janice H. Cox, MBA

World Animal Net



COVID-19

➤ Origins – all know



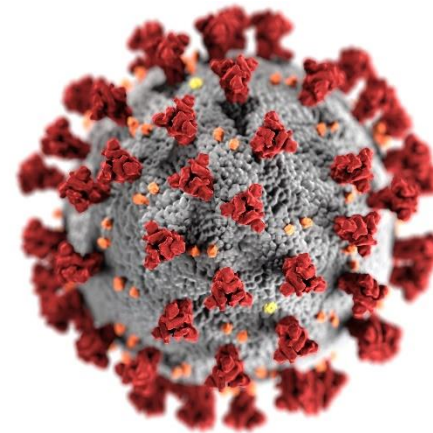
➤ Nor impacts

➤ But prevention of future pandemics



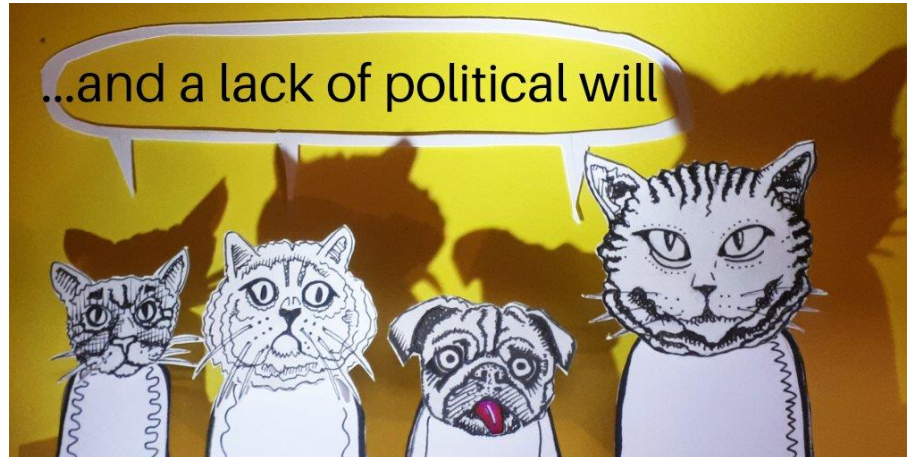
COVID-19

- 25 million cases, over 800,000 deaths
- Enormous social and economic impacts
- Stark reminder – dysfunctional relationship nature & animals
- More in future – increasing regularity and severity



Past Cries

- AP Advocacy – inhumane/unhygienic treatment of animals & Pandemic risks
- Farms – markets – transport – slaughterhouses
- Transformational change: Food systems; Wildlife
- Climate change, biodiversity, environment



Gaps & Silos

- Global AW Strategy, Regional AW Strategies
- Guiding Principles, International Standards – 182 countries
- BUT still in silo - OIE
- Most of UN System – lack political priority
- ❖ SDGs
- ❖ UNEP
- ❖ MEAs

Sentient animals

- renewable resources
- commodities



COVID Strikes

Webinars – Blogs – Articles – Social Media

- Most blamed poor planetary health and ecosystem destruction
- Hardly a mention of human treatment and misuse of animals
- Wildlife Trade/Industrial ag - Mixing/Amassing
- US Centers Disease Control & Prevention (CDC) 3 of 4 new/emerging diseases – animals



What We Did

- Webinars
- UNEP/CBD/WHO advocacy (animal issues/ prevention)

International Policy Forum - COVID Meeting

APO mapping (who doing what/"asks") – varied!

- ❖ Memorandum
- ❖ One Health/One Welfare
- ❖ UNEP/CBD
- ❖ Post-COVID recovery finance



Post-COVID Recovery

\$Multi-trillions

- **Build Back Better:** pandemic prevention & AW, as well as CC, biodiversity, environment
- **No funding for factory farming and wildlife trade**
- **Researcher – mapping IFIs - \$, response, ESS**
- **Targeted letters – meetings**

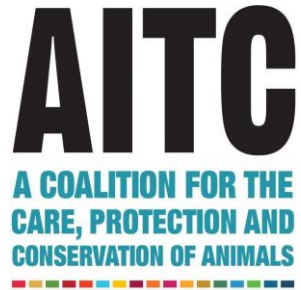


Post-COVID Recovery

- IFC, EIB, EBRD – funding industrial animal ag.
- African Dev Bank: No wildlife farming, Extensive livestock, One Health - & recognised
“the interconnection between people, animals, plants, and our shared environment”
- ILO & I-ADB Plant - Shift create 19M jobs in LAC
“Just Transition”



Other AP Work



Reports

- Pro-Veg: Food and Pandemics
- IFAW: Beyond COVID-19 (health & relationship wildlife)
- HSI: Wildlife Markets & COVID-19



UNEP Advocacy

➤ NGO MG: **COVID Advocacy Working Group**

UNEP Prevention of Pandemics Report 3/7 drivers

- ❖ Increasing demand animal protein
- ❖ Unsustainable agricultural intensification
- ❖ Increased use and exploitation wildlife

But... where is the action on these?!

➤ One Health





Director's COVID-19 message:

- **Concern about pandemic risk from wildlife trade**
- **Stimulus packages for alternatives to consumptive use**

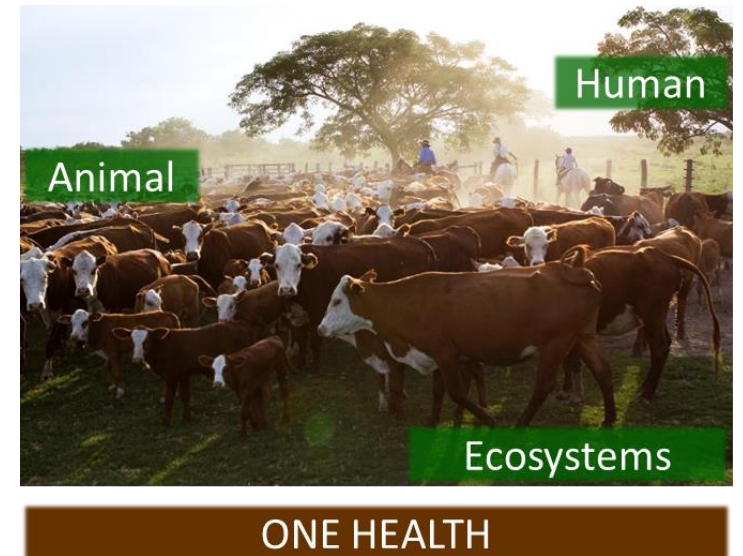
“keep wild animals in the wild”

- **Risks of bushmeat consumption**
- **One Health approach**



One Health/One Welfare

- Since COVID – One Health
- One Welfare preferred
- Proactive, preventative, wider
- Wellbeing
- AH AW mainstreaming
- Reassessing animal use – sustainability, health and welfare, safety, environment



Wider Reassessment

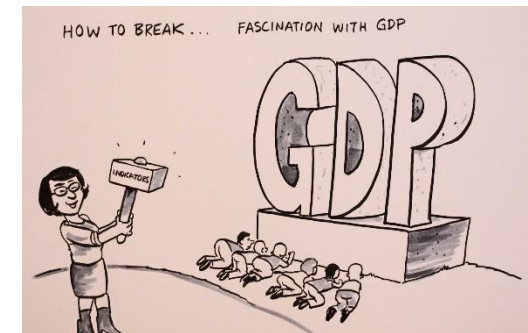
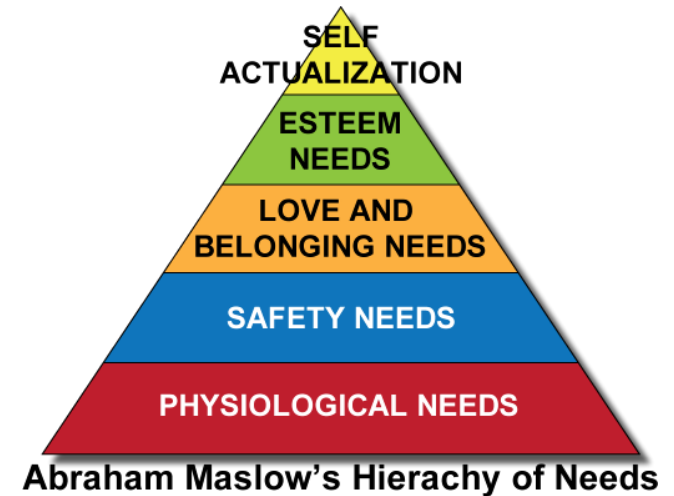
In the wake of Covid-19 there are growing calls for a reassessment in the way that human have been living – to the detriment of nature, animals and ultimately humans



Development Paradigm

Need new Development Paradigm

- Does not rely on endless economic growth
 - Prioritise the “flourishing of people, animals and nature”
- (Position statements)*

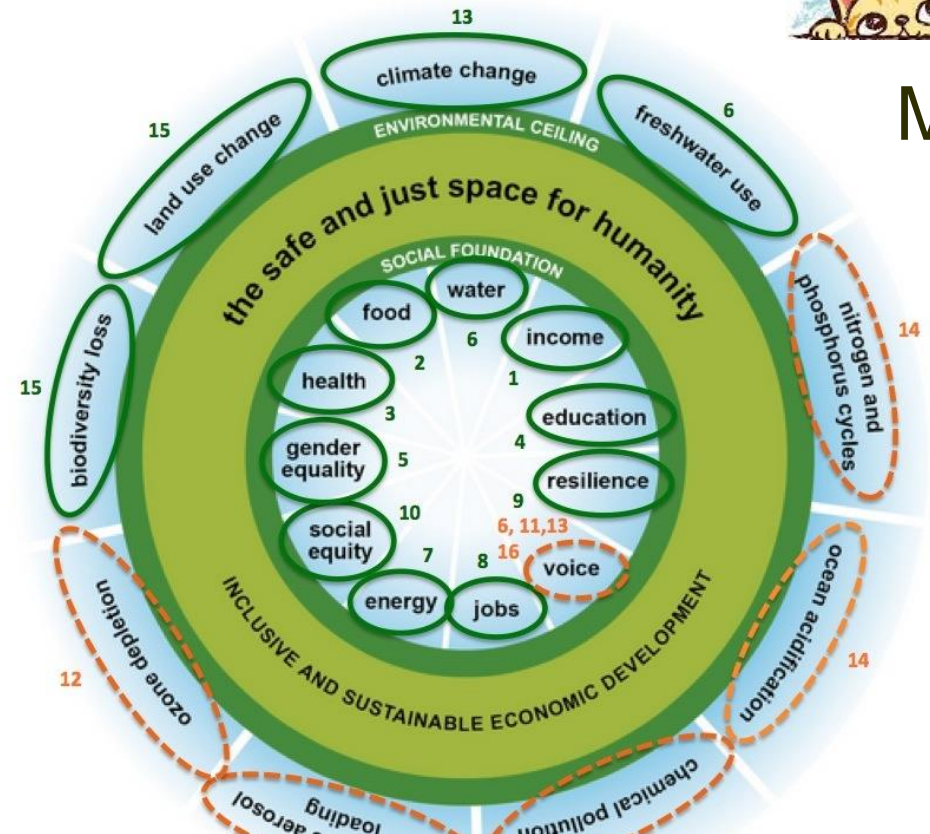


New Economic Systems

Circular Economy



Doughnut Economics?



Missing!



New Ethical Framework – Thriving World

New Priorities, New Mindsets

- Global Green New Deal
- Harmony with Nature (CBD Vision – UNEP Pillar MTS)
- Environmental SDGs/AW SDG
- SCP Focus



Vital Not to Side-Line Animal Issues!

“Building Back Better” – “Transformation”

- Transforming broken food systems
 - ❖ Industrial animal agriculture
- Wildlife trade
- Moving towards dietary change

COVID and other pandemics have delivered clear message on what is needed for real transformation –

We deny these at our peril!

