



# ***Animal Welfare and Pandemic Risk Mitigation -the role of One Welfare***



***Dr Mark Jones, Head of Policy, Born Free Foundation***

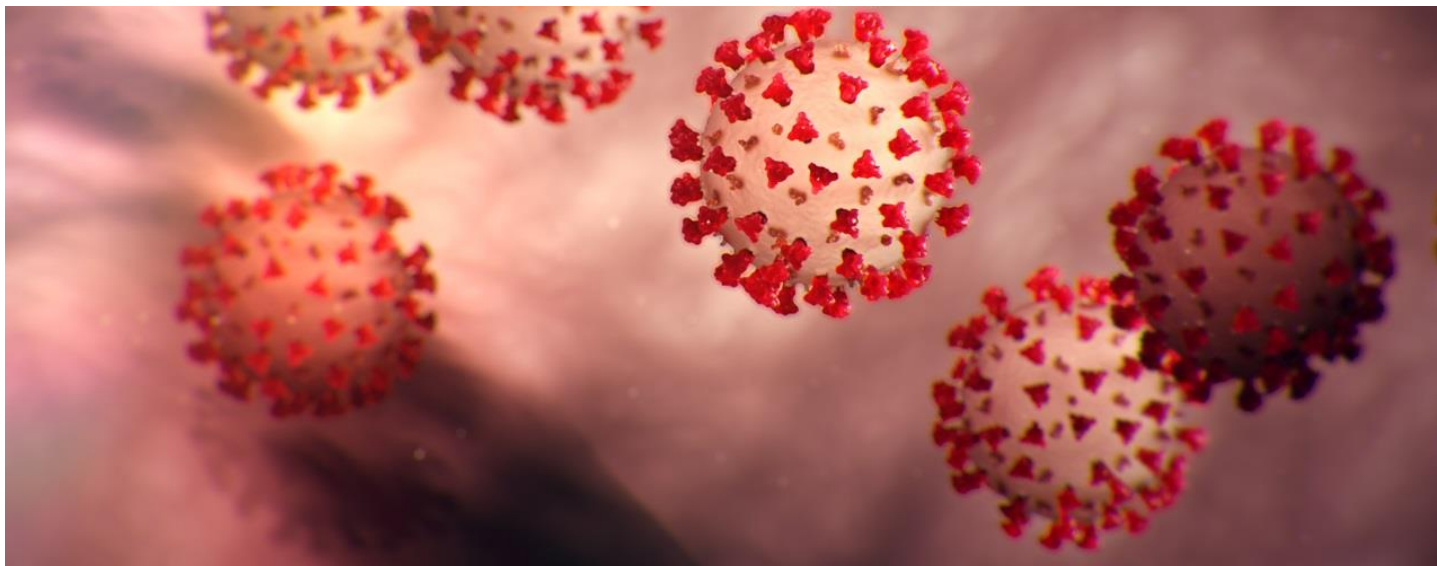
***Dr Rebeca Garcia Pinillos, Founder and Director, One Welfare***

***Adeline Lerambert, International Policy Specialist, Born Free Foundation***





# Covid-19





# A century of zoonoses

## A CENTURY OF ZOOSES

NUMBER OF KNOWN HUMAN DEATHS  
THE LIKELY MODE OF TRANSMISSION OF  
THE ZOOSES FROM WILDLIFE TO PEOPLE

### SPANISH FLU

40-50 MILLION  
DEATHS

From wild birds,  
most likely  
via farming of  
poultry and pigs

1918-1919

### SEVERE ACUTE RESPIRATORY SYNDROME (SARS)

774 DEATHS

From bats, via  
civet cats handled  
and traded in  
wildlife markets

2002-2003

### SWINE FLU

123,000-  
575,000 DEATHS

From birds, via  
farming, and  
the handling of  
infected pigs or  
eating their meat

2009-2010

### EBOLA

11,310-11,323  
DEATHS

From bats, via  
primates and  
duikers hunted  
and traded for  
their meat

2014-2016

1998

### NIPAH

100 DEATHS

From fruit bats,  
via pigs, when  
forests are cut  
down, and pig  
farms disturb  
bat ranges

2005

### MARBURG

329 DEATHS

From bats, via  
contact with  
their faeces or  
the handling,  
trading and  
eating of  
primates  
infected from  
bats

2012

### MIDDLE EAST RESPIRATORY SYNDROME (MERS)

660-850 DEATHS

From bats, via  
domesticated  
camels kept as  
companion or  
working animals

2019-PRESENT

### COVID-19

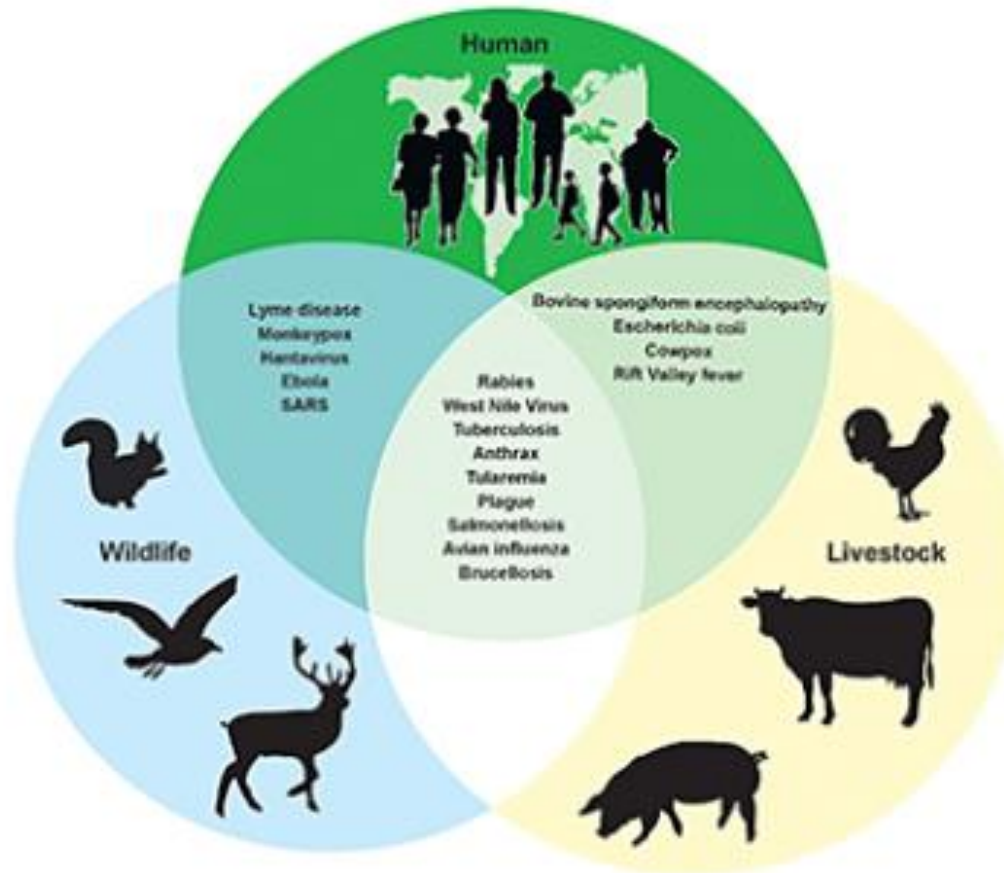
5 MILLION  
DEATHS\*

From bats,  
possibly via  
pangolins,  
associated with  
live wildlife  
markets

\*As of Oct 2021



# Future risk



*Zoonoses. Source: GAO.*



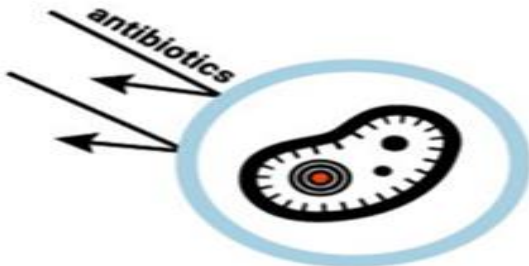
# Risk factors



## What factors are increasing zoonosis emergence? (Diseases transmitted from animals to humans)



 **Deforestation and other land use changes**



 **Antimicrobial resistance**



 **Intensified agriculture and livestock production**



 **Illegal and poorly regulated wildlife trade**



 **Climate change**

Source: UNEP Frontiers 2016 Report

# #COVID19



# IPBES Pandemics Workshop



*“Human ecological disruption, and unsustainable consumption drive pandemic risk”*

*“Land-use change, agricultural expansion, and urbanization cause more than 30% of emerging disease events”*

*“The trade and consumption of wildlife is a globally important risk for future pandemics”*

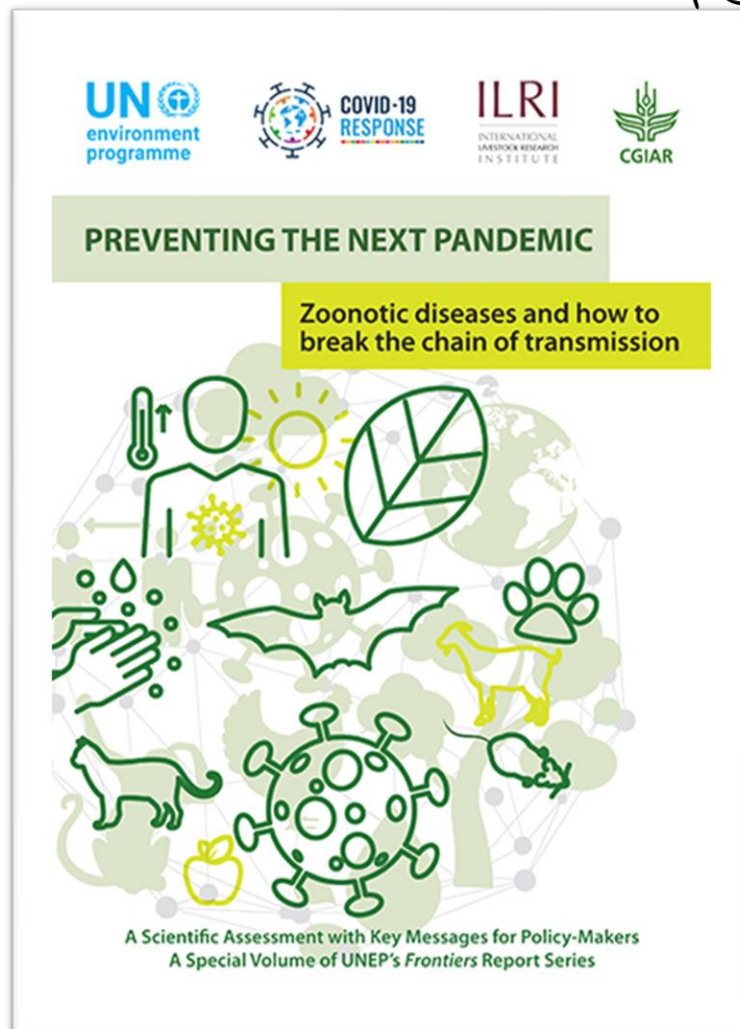
*“Current pandemic preparedness strategies aim to control diseases after they emerge. These strategies often rely on, and can affect, biodiversity”*

*“Escape from the Pandemic Era requires policy options that foster transformative change towards preventing pandemics”*



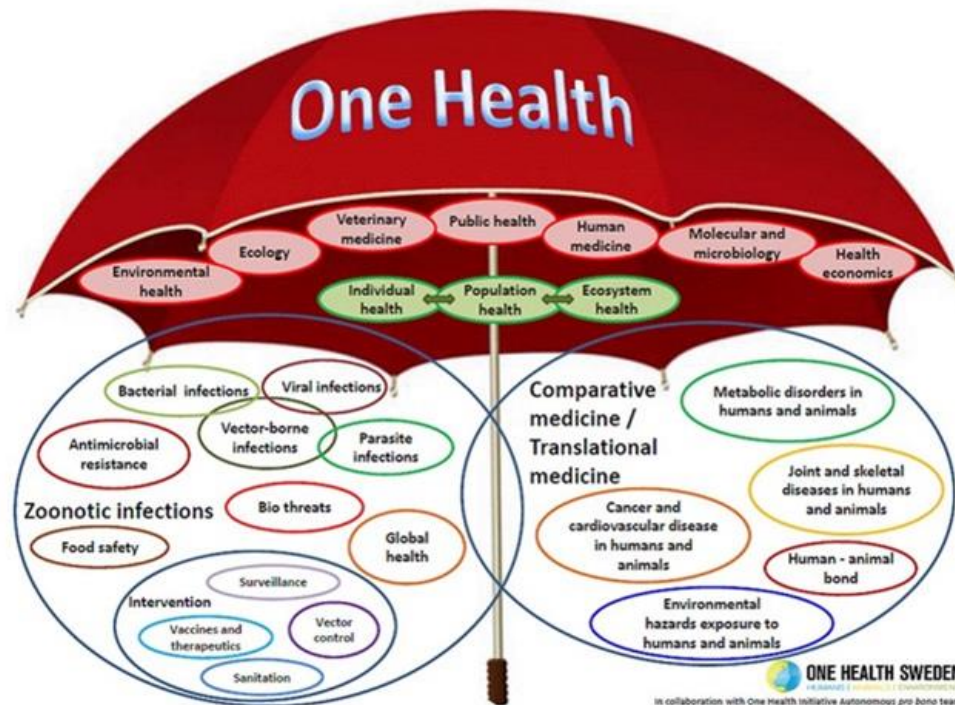


# The importance of animal welfare



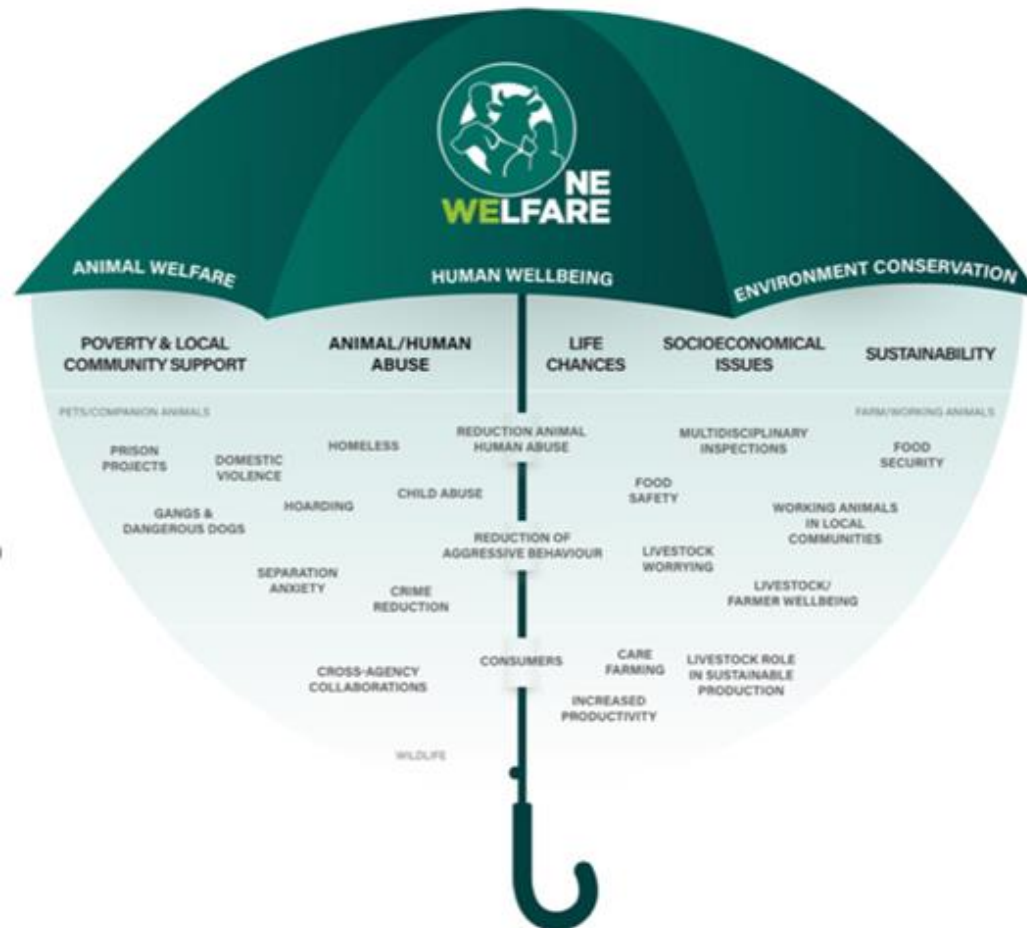


# Interdisciplinary collaboration





# One Welfare





# One Welfare



Interdisciplinary collaboration

Food security and sustainability

Improved understanding of the value of high welfare standards

Overarching support for the sustainable development agenda

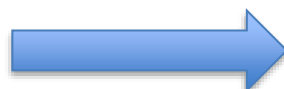
Recognition and implementation of increasing public recognition of ethical and moral imperatives



# One Welfare and the WHO Manifesto



## Prescriptions and Actionables for a Healthy and Green Recovery



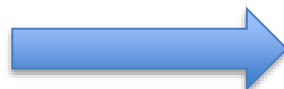
**Prescription 1.**  
Protect and preserve the source of human health: Nature.



**Prescription 2.**  
Invest in essential services, from water and sanitation to clean energy in healthcare facilities.



**Prescription 3.**  
Ensure a quick and healthy energy transition.



**Prescription 4.**  
Promote healthy, sustainable food systems.



**Prescription 5.**  
Build healthy, liveable cities.



**Prescription 6.**  
Stop using taxpayers money to fund pollution.





# One Welfare and international policy



## UN BIODIVERSITY CONFERENCE

### NEW DATES

11 - 15 October 2021  
VIRTUAL

25 April - 8 May 2022  
IN PERSON



2020 UN BIODIVERSITY CONFERENCE  
COP 15 - CP/MOP10-NP/MOP4  
Ecological Civilization-Building a Shared Future for All Life on Earth  
KUNMING · CHINA



[www.cbd.int/meetings/COP-15](http://www.cbd.int/meetings/COP-15)

#COP15





# Key actions



Key actions include:

***Reframing the Sustainable Use narrative to incorporate human and animal health risks and animal welfare concerns***

***Integrating animal health and well-being through the adoption of One Health and One Welfare approaches to reduce zoonotic disease risk and tackle the biodiversity and climate crises***

***Valuing and mainstreaming wildlife and nature protection and animal welfare into all decision-making***

***Adopting robust implementation mechanisms and ensuring adequate resourcing for wildlife and nature protection***



# Conclusions

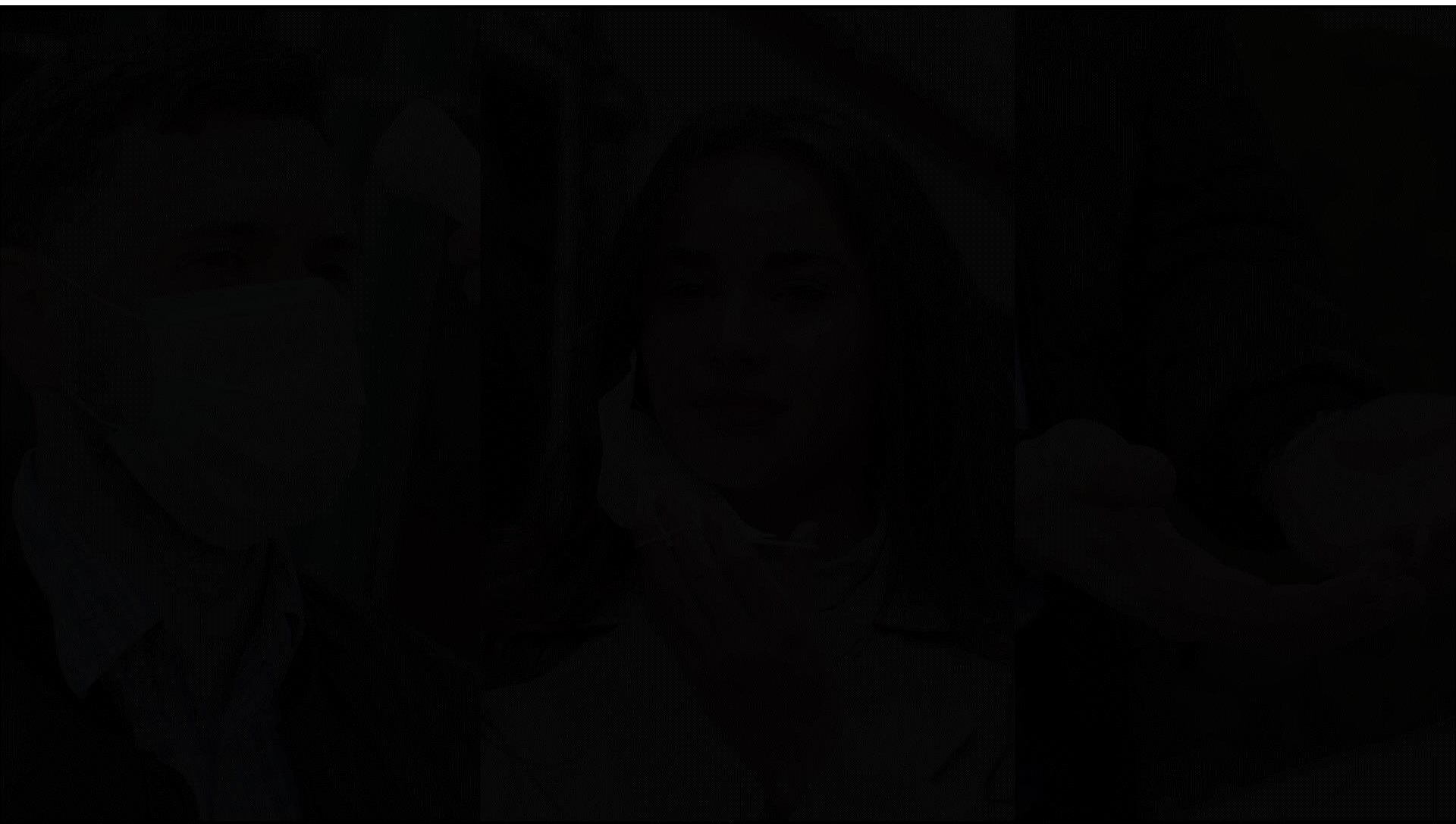


The COVID19 pandemic is a global challenge that must be tackled holistically; recognizing the interconnections between animals, people, and the environment and implementing a 'One Health, One Welfare' approach.

We must do everything possible to encourage collaborations  
'One health,  
One welfare'  
between different professionals  
ad sectors to maximize social  
benefits



# Protect Them





# Thank you for listening



[www.onewelfareworld.org](http://www.onewelfareworld.org)



onewelfare

CIC No: 11376147



[www.bornfree.org.uk](http://www.bornfree.org.uk)

 bornfreefoundation

 @bornfreefdn

 @bornfreefoundation

Charity No 1070906