



# Factory farming and Climate Change

**Dr. Victor YAMO,**

Farming Campaigns Manager,

Phone: +254 727 153574,

[VictorYamo@worldanimalprotection.org](mailto:VictorYamo@worldanimalprotection.org)



**World Animal Protection**



# Our vision

A world where animals  
live free from cruelty  
and suffering



Our

mission

We Move the World  
to protect animals



# Global Strategy 2021-2030



**Report:** <https://www.worldanimalprotection.or.ke/news/new-world-animals>



# OUR STRATEGIC VISION



© World Animal Protection

## GOAL 1

**ENSURE FARMED ANIMALS  
LIVE GOOD LIVES BY  
TRANSFORMING THE GLOBAL  
FOOD SYSTEM**



© Tree Tops

## GOAL 2

**STOP WILD ANIMALS BEING  
CRUELLY EXPLOITED AS  
COMMODITIES BY CHANGING  
THE SYSTEMS THAT ALLOW IT**

# Intersection of the 2 goals



## Goal 1

Ensure farmed animals live good lives by transforming the global food system

## Goal 2

Stop wild animals being cruelly exploited as commodities by changing the systems that allow it

**Animal  
Feed  
Production**

# Factory Farms





# Factory Farms



- ❑ A system in which many animals are raised in highly intensive methods, confined & overcrowded under very controlled conditions.
- ❑ Animal welfare and Sentience not recognized.
- ❑ **Goal** – Minimize costs and maximize profit, to quickly produce large supplies of meat at very low cost, all year round
- ❑ **Not sustainable**
  - Deforestation
  - Pesticide / Chemical use
  - Waste management
  - Antimicrobial Resistance



# Factory Farms

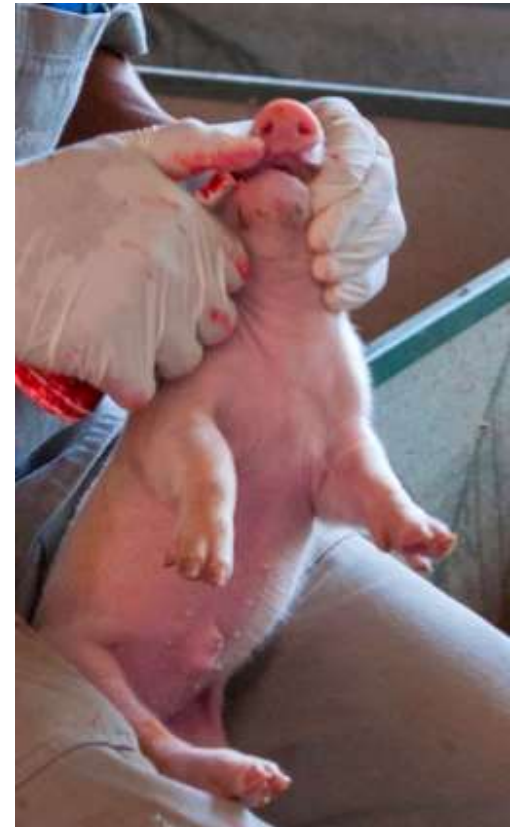


❑ Destructive, reliant on appalling animal suffering, worker hardships and misuse of the planet resources.

❑ Unacceptable practices include:

- ❖ Close Confinement
- ❖ Early Weaning
- ❖ Barren Poorly Ventilated Environments
- ❖ Routine Painful Mutilations
- ❖ Fast growth rate

❑ Excessive Use of antibiotics



# Meat Production & Consumption



## Current Production (2018)

80 billion animals consumed globally

- ✓ 69 billion chicken
- ✓ 1.5 billion pigs
- ✓ 574 million sheep
- ✓ 479 million goats
- ✓ 302 million cattle

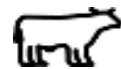
## Projected meat consumption growth by:

2030

- 30% Africa
- 18% Asia and Pacific
- 12% Latin America
- 9% North America
- 0.4% Europe

## Projected meat production growth by:

2030



5.9%



13.1%



17.8%



15.7%



# Impacts of Factory Farms



**Effects on  
public health**



**Biodiversity loss  
and pollution**



**Drives climate  
change**

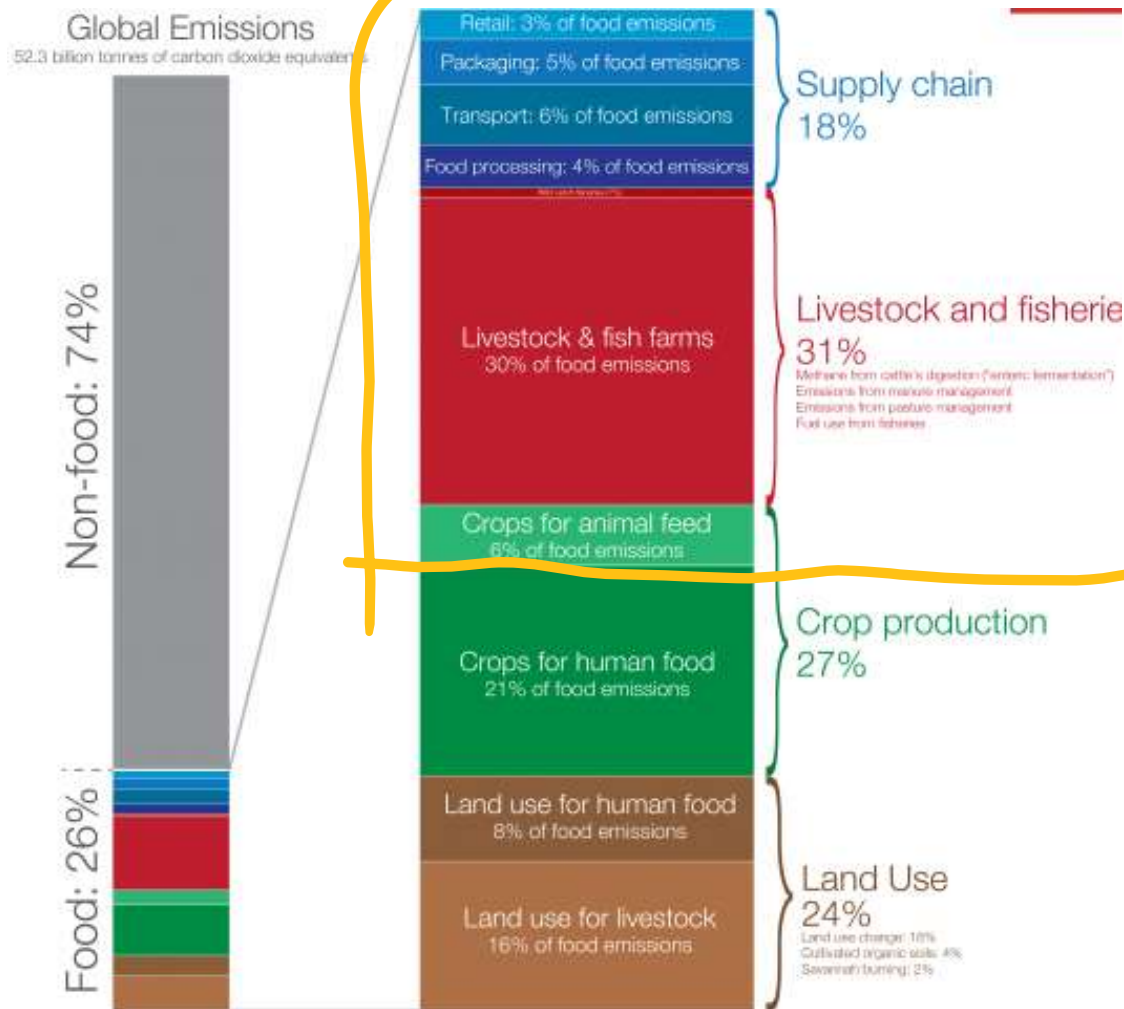


**Causes suffering to  
billions of animals**



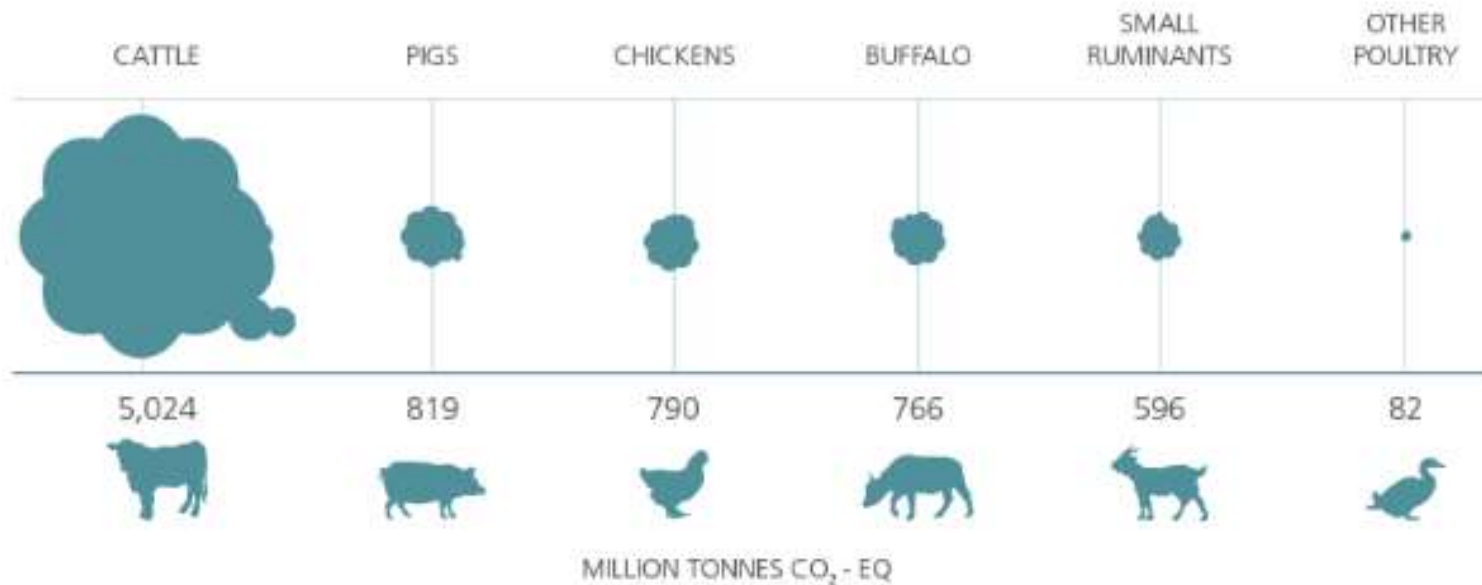
**Undermines  
food security**

# Factory farming & Climate change



- Food and Agriculture contribute about 26% of global human Green House Gases
- Major impact from Factory farming
- Factory farming = largest global source of methane and nitrous oxide

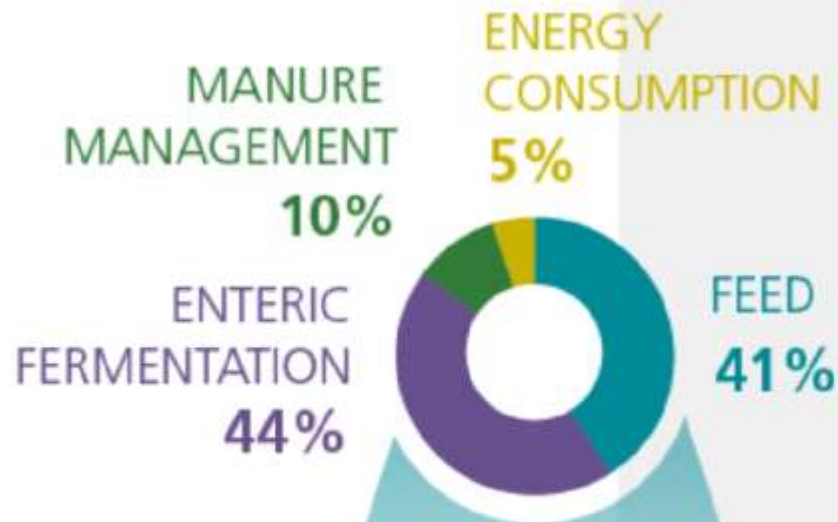
# Factory farming & Climate change



**Global estimates of emissions by species.** It includes emissions attributed to edible products and to other goods and services, such as draught power and wool. Beef cattle produce meat and non-edible outputs. Dairy cattle produce milk and meat as well as non-edible outputs.

Source <https://www.fao.org/gleam/results/en>

# Factory farming & Climate change



Source <https://www.fao.org/gleam/results/en>





## CLIMATE CHANGE AND CRUELTY

Revealing the true impact of  
factory farming



# The Report





# The Research



- ❑ Comparison of environmental impact of conventional factory farming with impact of Industrial Farms with higher welfare standards (**Farm Animals Responsible Minimum Standards - FARMS**).
- ❑ Measured impact of human diets containing less chicken and pork.
- ❑ Combined scenarios to model the climate change and environmental impacts when people '**eat less and better**'.
- ❑ Projections were then made for the above scenarios on climate impacts in 2030, 2040 and 2050.

# The Findings



- ❑ Biggest climate change and environmental impacts of factory farming are caused by production for crops for **animal feeds**
- ❑ Drives **Deforestation**, causing carbon to be released into the atmosphere when trees are cut down.

# The Findings



- ❑ Production of feed crops utilizes large quantities of water in severe **water scarce** regions = Not sustainable
- ❑ Production of feed crops **pollutes** water bodies that animals and people rely on with fertilizers and pesticides

# The Findings



- ❑ Using land to grow crops to feed animals that will become our food = Highly **inefficient** and destructive
  - For every **100 calories of crops** fed to farm animals = **only 17-30 calories reach humans**
  - Meat and Dairy provide only 18% of overall calories and 37% of proteins for humans but use 83% of farmland
  
- ❑ Better to grow crops for plant-based diets for direct human consumption.

# The Findings



By eating **50%** less meat



as well as adopting higher welfare meat consumption

in  
**2040**  
we would take

**210 million metric tons of greenhouses gas emissions**

# What Can You Do



- ❑ **Consumers** (People) – Choose to “*Eat Less and Better Meat*”
- ❑ Join our call on **Governments** to stop approving Factory farms by imposing a moratorium on factory farming within National Climate actions (Nationally Determined Contributions) in recognition of factory farming’s climate impact



# What Can You Do



□ Support our campaign for **Industry** to

✓ Implement Farm Animal Responsible Minimum Standards (FARMS) as a minimum,



✓ End deforestation in animal feed sourcing,

✓ Halve production and consumption of animal protein by 2040, and

✓ Phase out sourcing of monocrops like soya as feed for farmed animals (from 2030).

